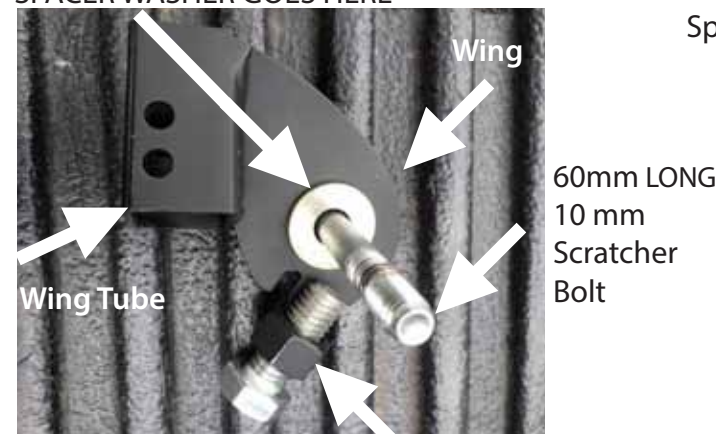


SPACER WASHER GOES HERE



Spacer washer on same side as angled Nut

Spacer Washer goes in BETWEEN WING and YOKE BASE



SPRING ACTS as a 'SPACER' ONLY

'ANGLED' Nut Holds Bolt and Against Scratcher yoke Base in Position you want

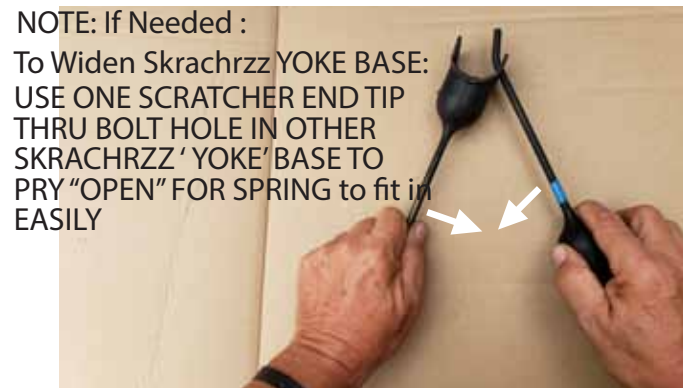


Tighten large Lock Nut So the 10mm Diameter, 60mm Long BOLT end comes FULLY Thru NUT(ONLY)



NOTE: If Needed :

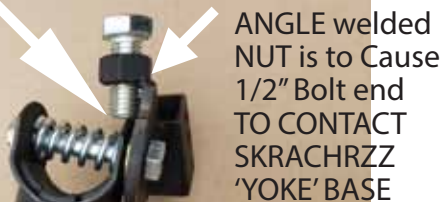
To Widen Skrachrzz YOKE BASE: USE ONE SCRATCHER END TIP THRU BOLT HOLE IN OTHER SKRACHRZZ ' YOKE' BASE TO PRY "OPEN" FOR SPRING to fit in EASILY



Tip:

DO NOT OVER TIGHTEN 1/2" ADJUSTMENT set Bolt End AGAINST YOKE BASE.

AFTER BOLT END TOUCHES YOKE BASE FINGER TIGHT TURN 1/2 TO ONE FULL TURN WITH 3/4" WRENCH



Your SKRACHRZZ'DOWN' PRESSURE setting CAN BE ADJUSTED ANY TIME TO MATCH ICE & HARDPACK TRAIL CONDITIONS, and as tips wear

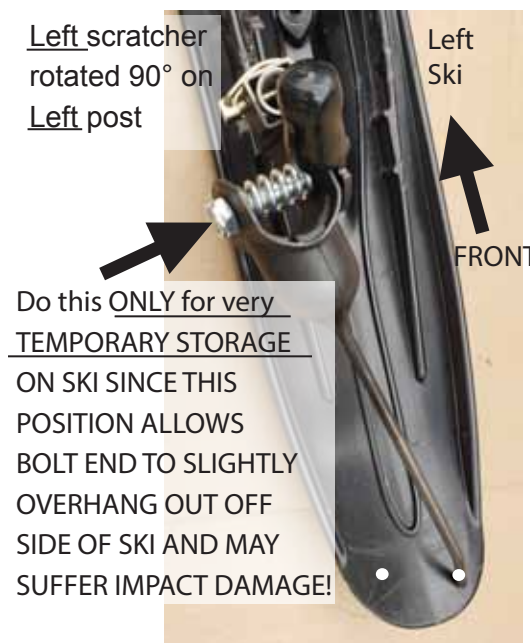


First Drill 5/16" holes 1/2" to 1" AHEAD(IN FRONT) of where the Tip Contacts SKI then Drill Larger 1/2" dia.Holes straight Through Ski-



Then ANGLE your DRILL - LIKE THIS - APTER THE INITIAL HOLES ARE MADE - TO FIT TIPS THRU Easily.

Left scratcher rotated 90° on Left post



Do this ONLY for very TEMPORARY STORAGE ON SKI SINCE THIS POSITION ALLOWS BOLT END TO SLIGHTLY OVERHANG OUT OFF SIDE OF SKI AND MAY SUFFER IMPACT DAMAGE!

This hole for tip is for when a Right scratcher is rotated 90° on Right post for temporary storage



This hole for tip is for when Left scratcher is on Right post for long term storage position shown here

Recommended for ON - SKI STORAGE: Install the LEFT SKRATCHER ON RIGHT POST TO PROTECT THE 'ASSEMBLY' From Impacts



On-Ski STORAGE Pic: Shows top view of LEFT SKRATCHER ON RIGHT POST WHICH KEEPS IT OVER MIDDLE OF SKI



Tip: To Remove Square Tube From STORAGE POSITION - LIFT - UP & OFF BY HOLDING SQUARE TUBE AND PULLING IT Directly UPWARDS TO GET IT OFF Ski POST Easily



OPTIONAL: FROM TIME - TO - TIME - SWITCH SCRATCHER RODS(ONLY) TO OPPOSITE SIDES: YOU CAN KEEP YOUR TIPS SHARP BY SWITCHING R-TO-L AND L-TO-R FOR MAXIMUM SPRAY FOR LUBE COOLING - ESPECIALLY ON ICE!



Raised 'Collar' on oval post bolt washer faces RIB and post bolt must be Extremely Tightened until washer is fully tight against ski rib



RIGHT SKI POST ONLY IS MARKED with RED DOT

STORAGE ON SKI: - 2 HOLES DRILLED IN REAR OF SKI TO HOLD SKRACHRZZ TIPS SECURELY ARE HIGHLY RECOMMENDED!

